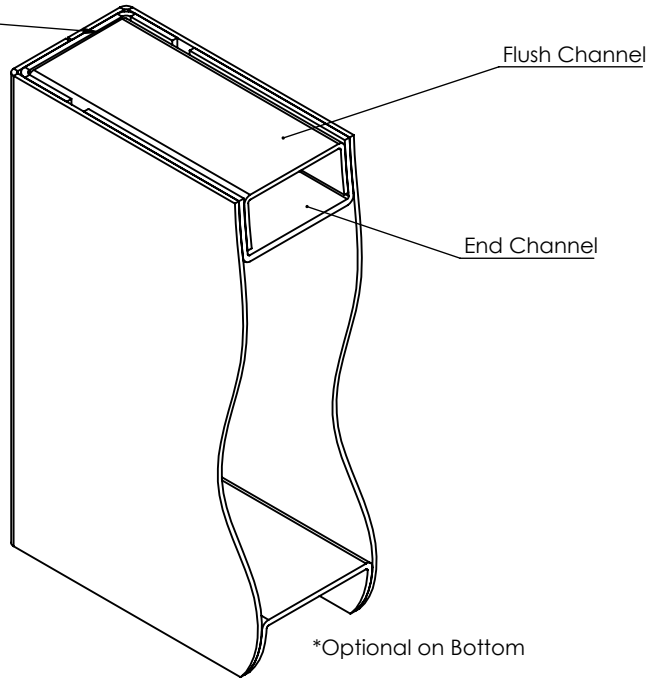
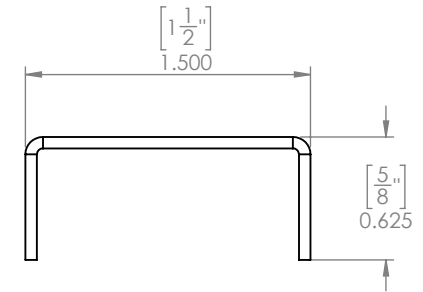
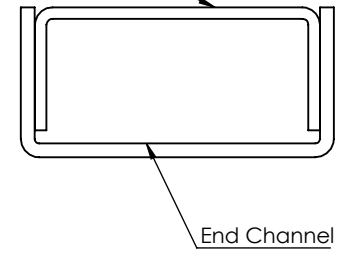



Continuous Weld Edge  
Both Ends  
Grind Flat



Flush Channel  
Min 16 Gauge



REVISIONS		
No.	DESCRIPTION	DATE

	1701 East 22nd Street Little Rock, AR 72206 TEL: 501.372.3441 800.334.3070 FAX: 501.375.3070 email: NCHMetal.com	
	TITLE: Typical Door Cross Section: Flush Channel  UNLESS OTHERWISE SPECIFIED ALL DIMENSIONS ARE IN INCHES	

Flush Channel Detail	
Drawn by: K. Jelley	Date: 02-26-18
DRAWING No. 005	SHEET 005 of 027